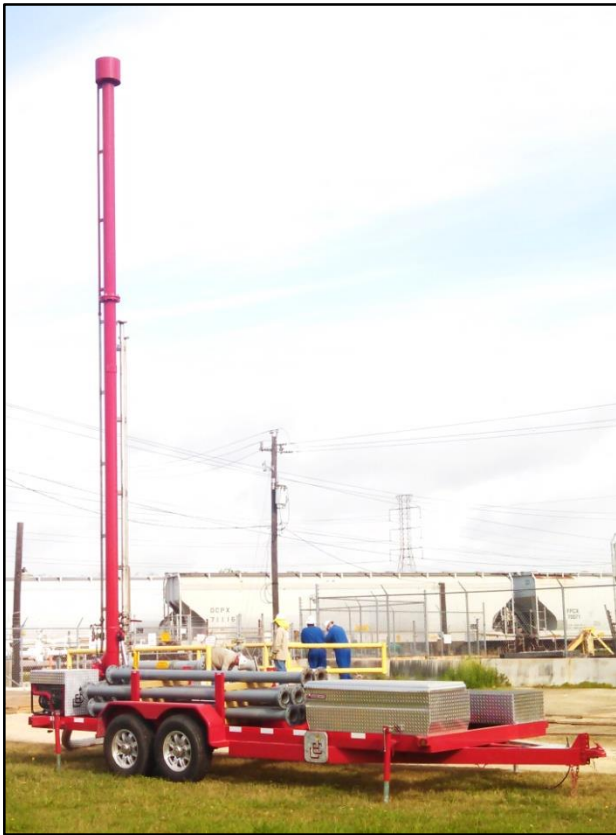




# 6"x40' Natural Gas Flare Stack

## Flare Design Highlights



Flare Height:	40'
Flare Diameter:	6"
Flare Tip Diameter:	6"
Max Flow Capacity	1MM scf/hr
Pilot gas flow rate:	*25scf/hr
*assuming propane as fuel	28950 btu/hr
Exit Velocity at max flow rate:	392 ft/s
Destruction Efficiency - Natural Gas:	98%
Pilot System:	Propane pilot with push button, thermocouple with temperature read out

### Environmental Statement:

Clean Combustion's HV-6 Model is designed in compliance with 40 CFR 60.18 and 30 TAC 106.492, and when operated according to Clean Combustion's operating procedures, will achieve the listed destruction efficiencies.